

# Developing Standard Operating Procedures (SOPs) for Clinical Social Work at Kamuzu Central Hospital, Malawi

## The Partners

### Kamuzu Central Hospital (KCH):

- Tertiary level hospital located in Lilongwe
- Leading public health facility for the Central Region of Malawi
- 300 000 patient contacts annually, 45 000 inpatient treatments, 884 beds
- Main Departments: Obstetrics and Gynaecology, Surgery, Medicine and a Paediatric Department

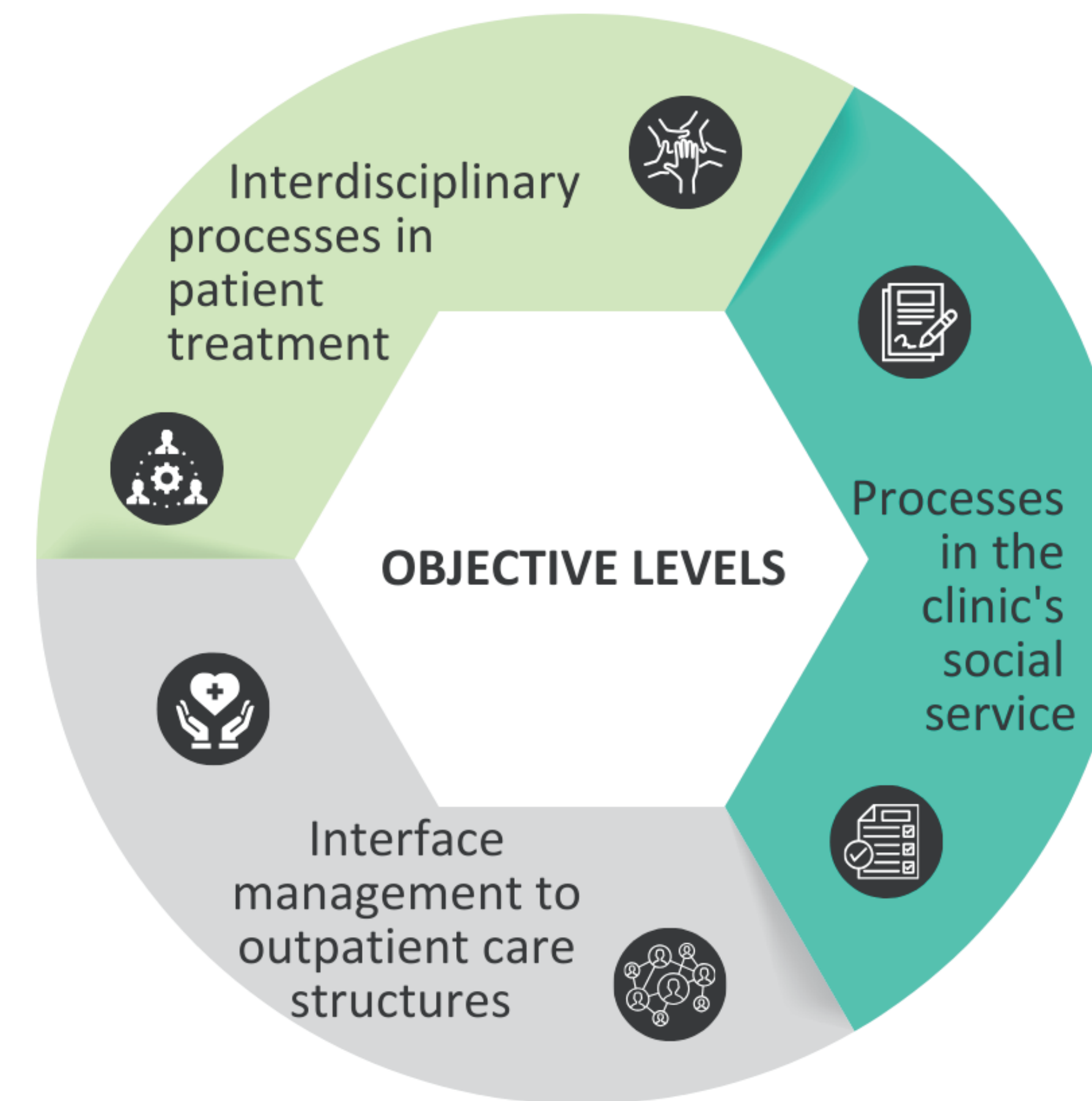
### RheinMain University of Applied Sciences (HSRM):

- University of Applied Sciences with five faculties located in Wiesbaden and Rüsselsheim
- Department of Social Work with currently 2 000 students in different specialized courses of study on Bachelor-, Master- and PhD-Level
- High specialization in research and teaching in social work and health
- Second project of the KCH and HSRM in the clinic partnership after Safe@KCH

### The Project:

- Project duration: April 2024 to March 2026
- First project for hospital social work in the hospital partnership funding line

## Project Objectives



- Knowledge of other professional groups about the work and skills of social services
- Greater involvement of social services in treatment

- Development of counseling standards for social services within the team
- Development of a documentation and reporting system for social services

- Analysis of outpatient counseling and care services and structures for the three patient groups
- Interface improvement through structured handovers

## Project Schedule

### PLANNED ACTIVITIES



## Background of Clinical Social Work

### Tasks of Clinical Social Work:

- Social work offers complementary expertise to doctors and nurses in order to provide patients with holistic care that meets their needs
- The profession is part of the interdisciplinary team and is particularly important in complex patient care to ensure good patient transitions
- Clinical social work approaches are: Psychosocial counseling, case and care management, networking in professional and non-professional care structures, psychosocial crisis interventions due to illness

### Clinical Social Work in Malawi:

- Social work as a complementary, specialized profession is only slowly developing in Malawi's health system
- Social work professionals are increasingly being deployed in inpatient and outpatient care to advise patients and their relatives on social issues relating to illness
- Three trained social work specialists work at the KCH and form the social services department

## Focus Treatments for the SOPs

### Cancer and Palliative Care

- High prevalence of cancer, first diagnosis at an advanced stage
- Palliative supportive therapy is increasingly being offered
- Social work provides support in dealing with this difficult life situation and develop care structures for patients and their families



### Traumatic Brain Injury

- Traffic accidents often result in serious brain injuries
- Patients are confronted with severe long-term consequences, complex care needs, disability and limited participation in everyday life
- Social work supports inclusion and network development



### Mental illness

- Diagnosis and treatment of mental disorders are complex with social consequences
- Social connection of patients after hospital stay important
- Social work more strongly integrated and also supports relatives



## Team

- Victoria Liwimbi<sup>1</sup>
- Ingo Neupert<sup>2</sup>
- Khadija Sanudi<sup>1</sup>
- Anne Taubert<sup>2</sup>
- Ulrich Wunderlich<sup>2</sup>
- Winnie Yotamu<sup>1</sup>

<sup>1</sup> Kamuzu Central Hospital, Lilongwe, Malawi, vliwimbi1@gmail.com

<sup>2</sup> RheinMain University of Applied Sciences, Wiesbaden, ingo.neupert@hs-rm.de

