

05.06.2024



3rd International Day

# Korea Konkuk Uni.



Sihyun Kim  
Jieun Choi

# Table

01

About  
Korea

02

Korean  
Culture

03

Landmark

04

The Lives Of  
Korean Students

05

Konkuk  
University

06

Architecture &  
Civil Engineering

# About Korea



**Korean Alphabet**

	ㅏ	ㅑ	ㅓ	ㅕ	ㅗ	ㅛ	ㅜ	ㅠ	ㅡ	ㅣ
ㄱ	가	카	갸	갨	고	코	구	규	기	키
ㄴ	나	나	너	너	노	노	누	뉴	니	니
ㄷ	다	다	더	더	도	도	두	두	드	디
ㄹ	라	라	러	러	로	료	루	류	르	리
ㅁ	마	마	머	머	모	묘	무	뮤	므	미
ㅂ	바	바	버	버	보	보	부	뷰	브	비
ㅅ	사	사	서	서	소	소	수	슈	스	시
ㅇ	아	아	어	어	오	오	우	유	으	이
ㅈ	자	자	저	저	조	조	주	주	즈	지
ㅊ	차	차	처	처	초	초	추	추	츠	치
ㅋ	카	카	커	커	코	코	쿠	큐	크	키
ㅌ	타	타	터	터	토	토	투	투	트	티
ㅍ	파	파	퍼	퍼	포	포	푸	퓨	프	피
ㅎ	하	하	허	허	호	호	후	휴	흐	히

# South Korea



Since 1948, South Korea and North Korea.

# Weather In Korea



a temperate climate

four distinct seasons

# Korea's leading brand



SAMSUNG

cellphone



LG

home appliances



HYUNDAI

car

# Lunar New Year



# FOOD





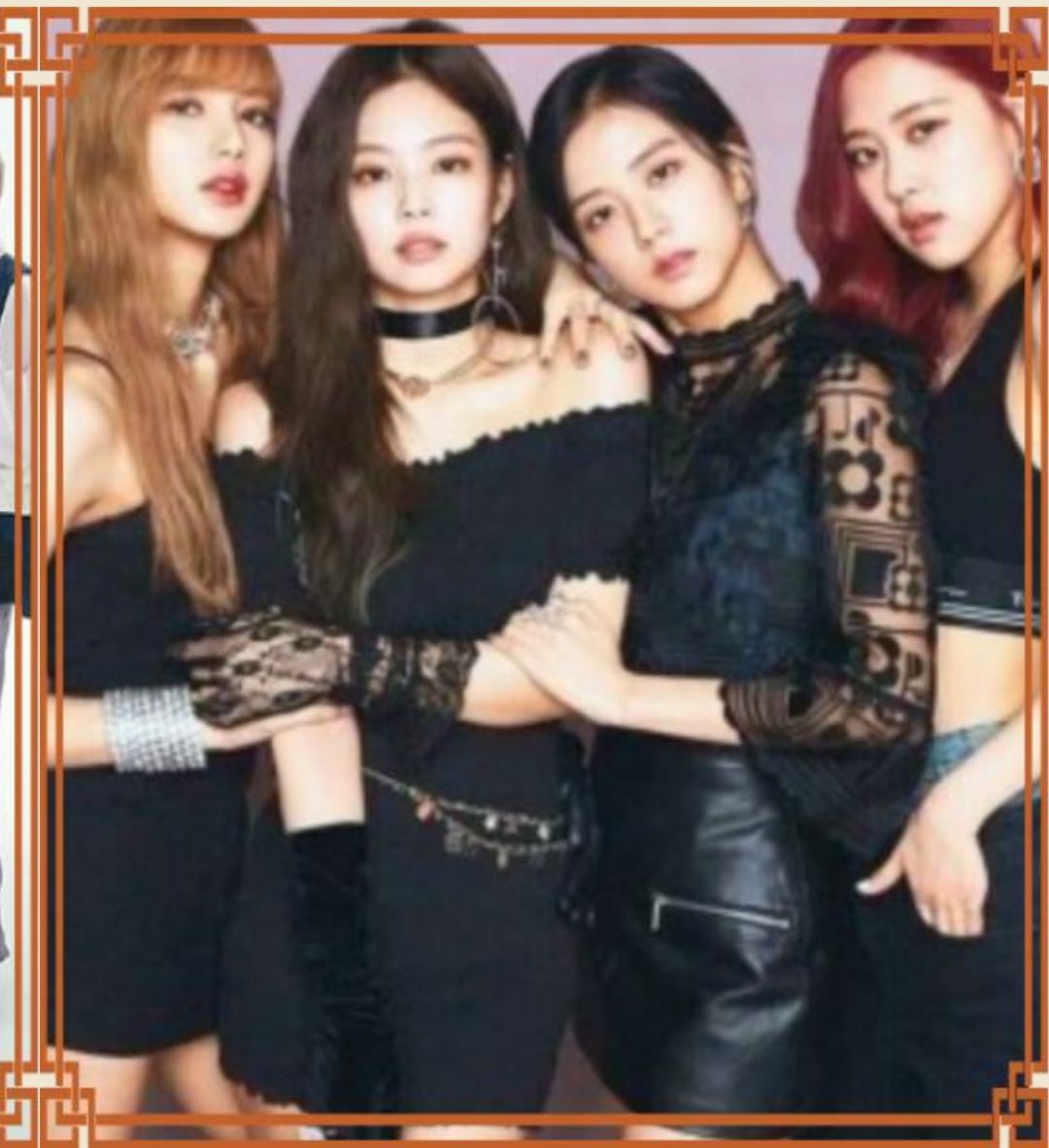
# Popular Culture: K-POP



PSY



BTS

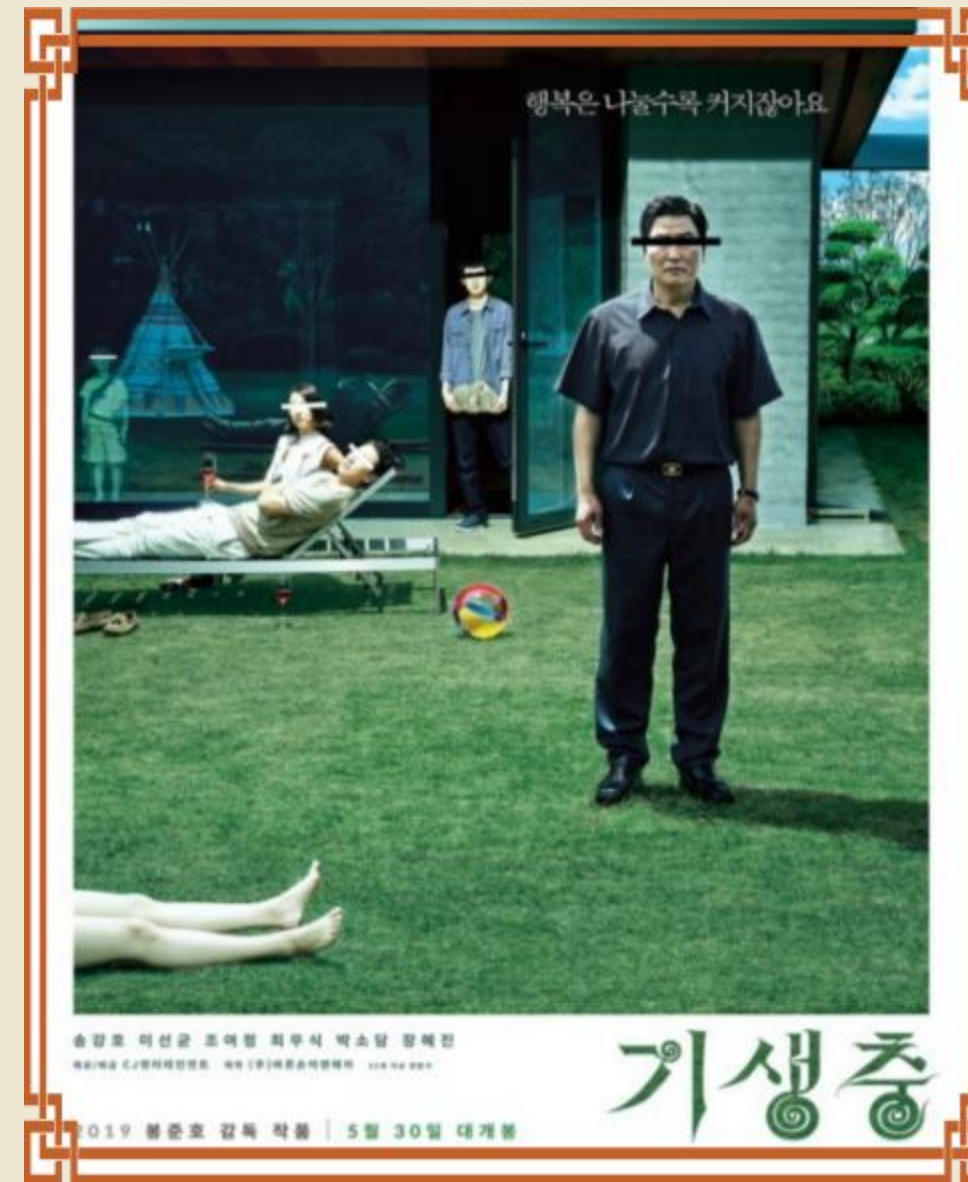


BLACK PINK

# Popular Culture: K-MOVIE



Squid  
Game



parasite

# The lives of Korean Students



# Two Things You Must Do



Eating  
delivery  
food  
at Han  
River



Wearing  
Korean  
School  
Uniforms

# LANDMARK



TRADITION



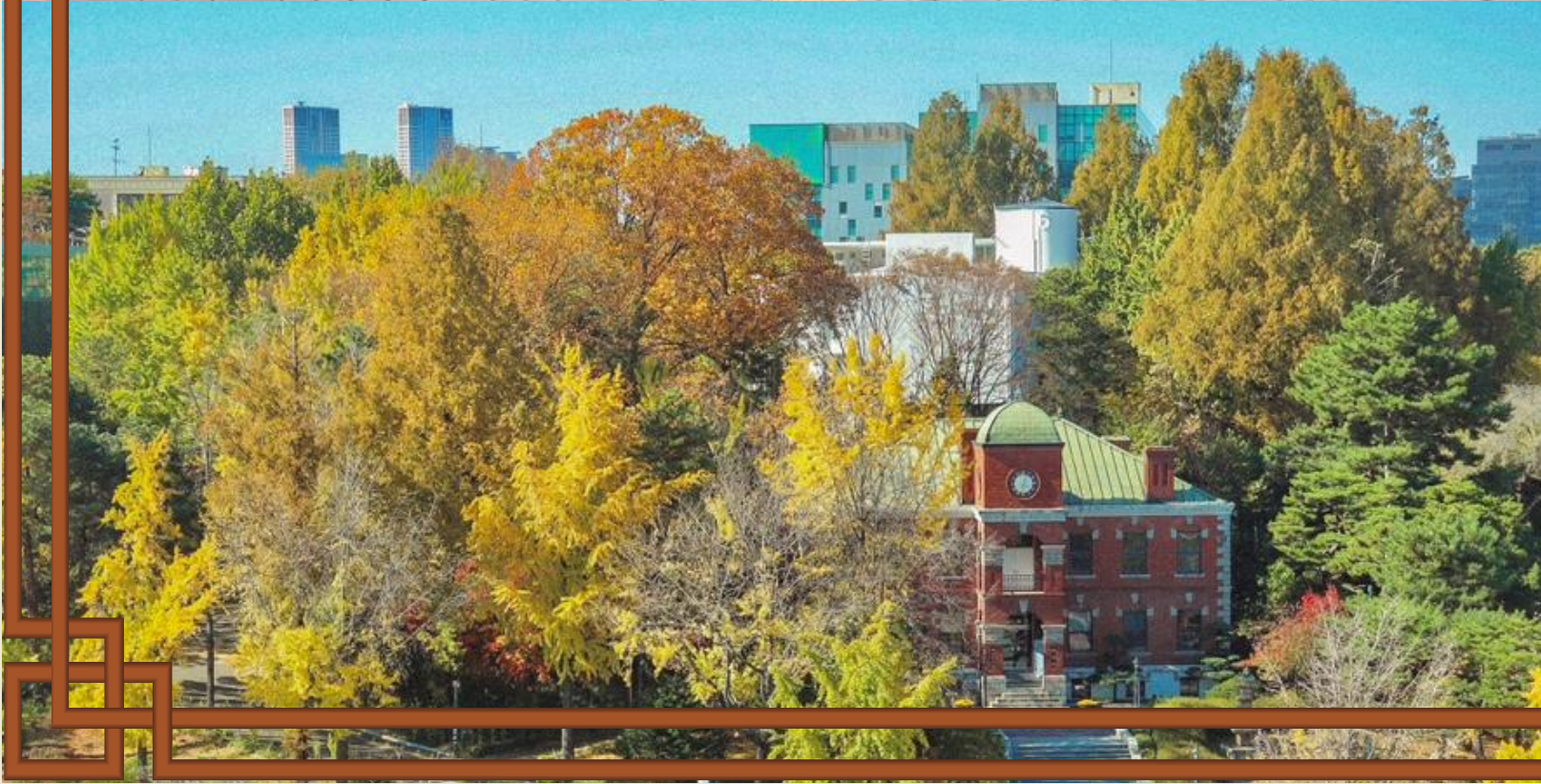
MODERN



NATURE



KONKUK UNIV



# CAMPUS





# FACILITY



## LIBRARY

### Internal Facility

Reading room, Data room, Digital lounge,  
Startup information center,  
K-CUBE, Student cafeteria, etc.

### Library Hours

#### Data room :

Weekday : 09:00 ~ 21:00

Saturday : 09:00 ~ 13:00

#### Reading room :

Weekday : 05:00 ~ 23:00

Saturday : 05:00 ~ 23:00

\*Reading Room No.2 is open 24 hours

# FACILITY



## K-CUBE, K-HUB

### Internal Facility

Individual/group study space, seminar room

### How to use

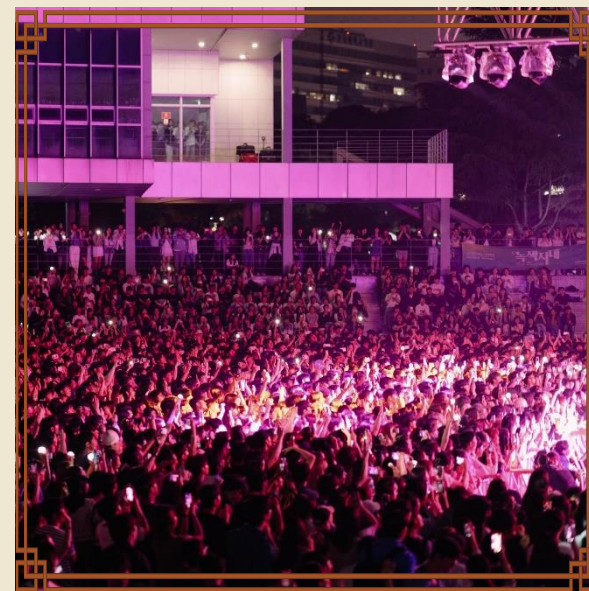
Freely available  
Some K-CUBEs require advance reservations

### Internal Facility

Engineering Hall, Life Science Hall, Library,  
Management Hall, Architecture Hall, etc.

Chapter.00

# FESTIVAL



---

# DEPARTMENT EVENT



# COURSES

## Architecture

Drawing 2d, 3d  
architectural drawings  
Design of a 9mX9m  
single use building



Freshman  
1,2 semester



Sophomore  
3,4 semester

Designing Single-Family Homes  
and Multi-Family Dwellings:  
Capturing Life in Everyday Spaces

Design of facilities and cultural facilities  
Space design suitable for use.  
Aesthetic and functional aspects  
of the building.



Junior  
5,6 semester



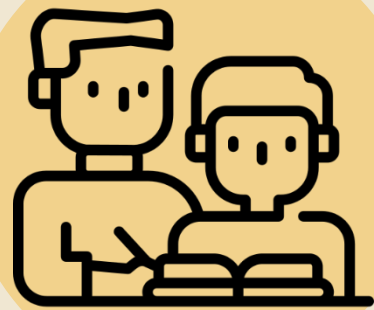
Senior  
7,8 semester

Graduation project:  
Free topic project

# COURSES

## Civil and Environmental Engineering

Introduction To Civil And Environmental Engineering Design



Freshman  
1,2 semester



Sophomore  
3,4 semester

Fluid Mechanics  
Introduction To Smart City  
Civil Engineering Materials And Experiment  
Introduction To Environmental Engineering

1. Water resources and ecological engineering
2. Smart City and Atmospheric Modelling
3. Environmental Process and Plant Design Technology
4. Ground and geotechnical application



Junior  
5,6 semester



Senior  
7,8 semester

Civil And Environmental Engineering  
Capstone Design



Thank You